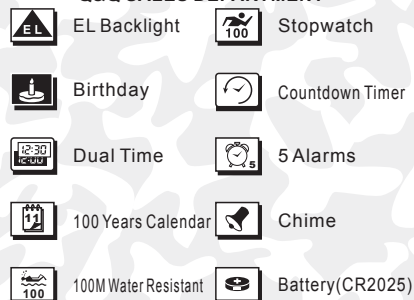


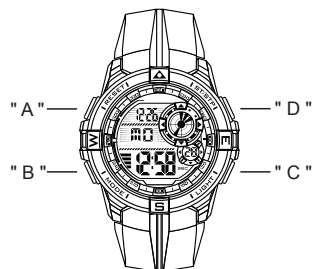
USER'S GUIDE

YP17749(MULTI FUNCTION SPORT LCD WATCH)
CITIZEN WATCH CO.,LTD.
Q&Q SALES DEPARTMENT



BUTTONS

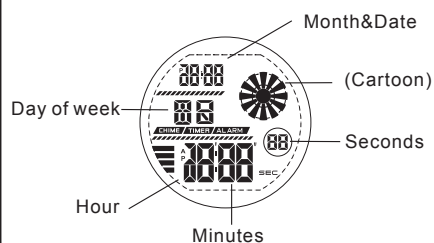
- Button operation are indicated using the letters shown in the illustration.



A -- Reset
B -- Mode
C -- EL backlight
D -- Start / Stop

DISPLAY

- The screen shown in below:



ATTENTION

1. Never try to open the case or remove its back cover.
2. Do not operate buttons underwater.
3. Should moisture appear inside the watch, have it checked immediately by your dealer. Otherwise it can cause erosion of the metal parts of the watch.
4. Though the watch is designed to withstand normal use, you should avoid rough use or dropping the watch.
5. Avoid exposing the watch to temperature extremes.
6. Wipe the watch with dry, soft cloth only. Avoid allowing it to come into direct contact with chemical materials, which can cause deterioration of the plastic parts of the watch.
7. Avoid to wear the watch in electromagnetic, static conditions.

MODE SELECTION

- Press "B" to change mode to mode in the following sequence:
Timekeeping Mode → Stopwatch Mode → Countdown Mode → Alarm Mode → Dual Time Mode → Birthday Mode.

a TIMEKEEPING

- 12/24H Format;
- Hour, Minutes, Seconds, Day of week, Month, Date;
- 100 years Calendar (2000 ~ 2099).



b STOPWATCH

- Measuring range: 0'00"00 ~ 23:59'59".



c COUNTDOWN

- 23:59'59" ~ 0'00"00.



d ALARM

- 5 Alarms;
- Hourly time signal;
- The alarm sounds at the preset time each day.



e DUAL TIME

- The time for other time zone.



f BIRTHDAY

- Eight birthday.



a TIMEKEEPING

12/24H Format

- In the timekeeping mode, press "D" to switch between 12/24H formats.



Time Setting

1. In the timekeeping mode, press and hold "A" the seconds to flash (flashing indicated in set mode);



2. Press "D" to reset the seconds;



3. Press "B" change to the next selection;



4. Press "D" to increase the number, press and hold to change at high speed;



5. Repeat step 3 and 4, the selection in the following sequence:
Seconds → Hour → Minutes → Year → Month → Date;

6. Press "A" to exit the set state, after you set (The day of week is auto displayed in accordance with year, month and date setting).

b STOPWATCH

A Lap Time

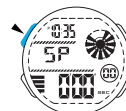
1. In the stopwatch mode, press "D" to start the stopwatch;



2. To stop the stopwatch by pressing "D" again;



3. Press "A" to reset the stopwatch.

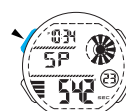


Split Time

1. In the stopwatch mode, press "D" to start the stopwatch;



2. Press "A" to display the split time, stopwatch timing continues internally;



3. Press "A" to clear the split time and to continue time measurement;



4. Repeat step 2 and 3, you can measure the multi split time;

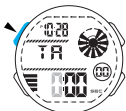
5. Press "D" to stop the stopwatch.

c COUNTDOWN

- When the countdown reaches zero, the alarm sounds for about 60 seconds and press any button to break it.

Countdown Timer Setting

- In the countdown mode, press "A" the hour to flash(fashing indicated in set mode);



- Press "D" to increase the hour, press and hold to increase at high speed;



- Press "B" change to the next selection;



- Press "D" to increase the number, press and hold to change at high speed;



- Repeat step 3 and 4, the selection in the following sequence:
Hour _ Minutes _ Seconds;

- Press "A" to exit the set state, after you set.

Use Countdown Timer

- Press "D" to start the countdown;



- To pause the countdown by pressing "D" again.

d ALARM

- The alarm sounds at the preset time each day for about 60 seconds, press any button to break it.

Alarm and Chime

- In the alarm mode, press "C" to select chime, Alarm1 ~ Alarm5.



- In the chime state, press "D" to on/off the chime.



- In the Alarm1 ~ Alarm5 state, press "D" to on/off the alarm.



Alarm1 Setting

- In the alarm mode, press "A" the hour to flash(fashing indicated in set mode);



- Press "D" to increase the hour, press and hold to increase at high speed;



- Press "B" to select the minutes;



- Press "D" to increase the minutes, press and hold to increase at high speed;



- Press "A" to exit the set state, after you set.

- Setting and operation of the Alarm1~Alarm5 are the same.

e DUAL TIME

Dual Time Setting

- In the dual time mode, press "A" the hour to flash(fashing indicated in set mode);



- Press "D" to increase the hour, press and hold to increase at high speed;



- Press "B" to select the minutes;



- Press "D" to change the minutes(press once change 30 minutes);



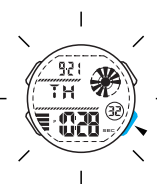
- Press "A" to exit the set state, after you set.

BACKLIGHT

- The backlight that uses an EL (electroluminescent) cause the display to glow for easy reading in the dark.

Use EL Backlight

- In timekeeping mode, press "C" to illuminate the display about 3 seconds.



f BIRTHDAY

- The alarm sound about 60 seconds at the birthday coming, press any button to break it.

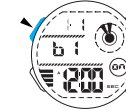
Birthday

- In the birthday mode, press "D" to ON ("on") / OFF ("off") the birthday.

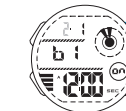


Birthday Setting

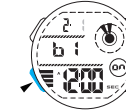
- In the birthday mode, press "A" the month to flash(fashing indicated in set mode);



- Press "D" to increase the month, press and hold to change at high speed;



- Press "B" change to the next selection;



- Press "D" to increase the number, press and hold to change at high speed;



- Repeat step 3 and 4, the selection in the following sequence:
Month _ Date _ Hour _ Minutes;

- Press "A" to exit the set state, after you set.

- Press "C" change to the next birthday, the setting same as the above.